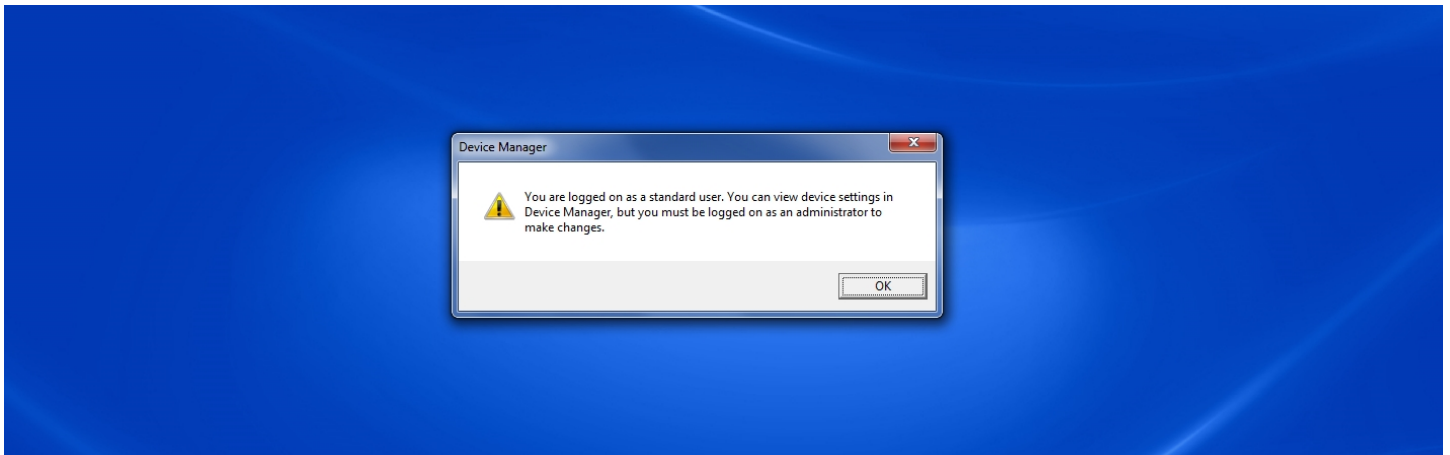
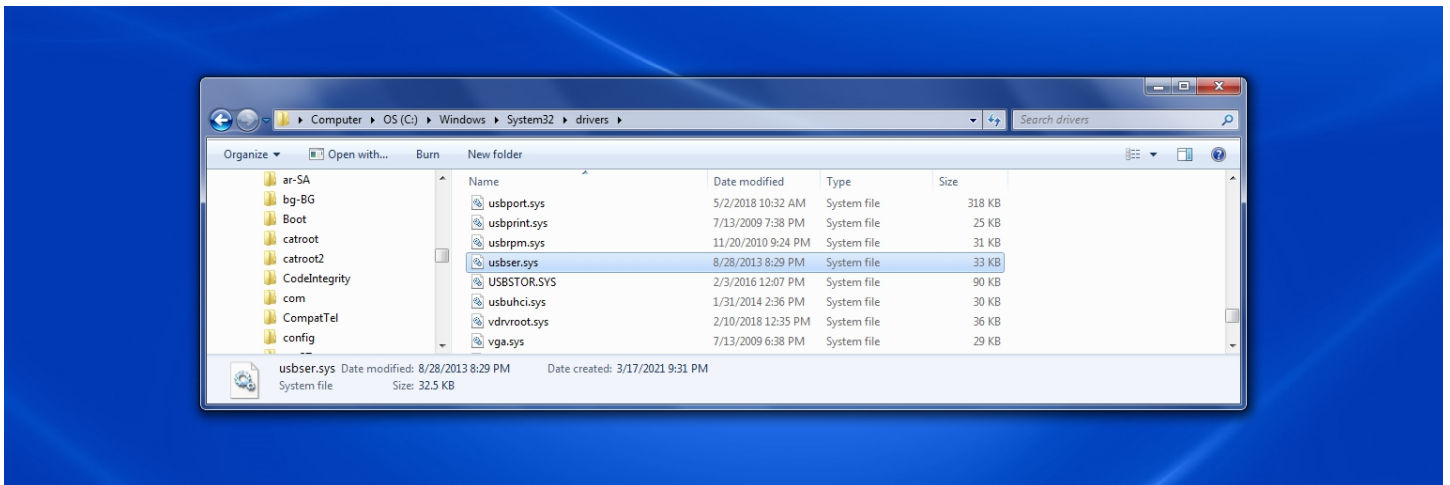


ACE Apex Com port driver installation instructions

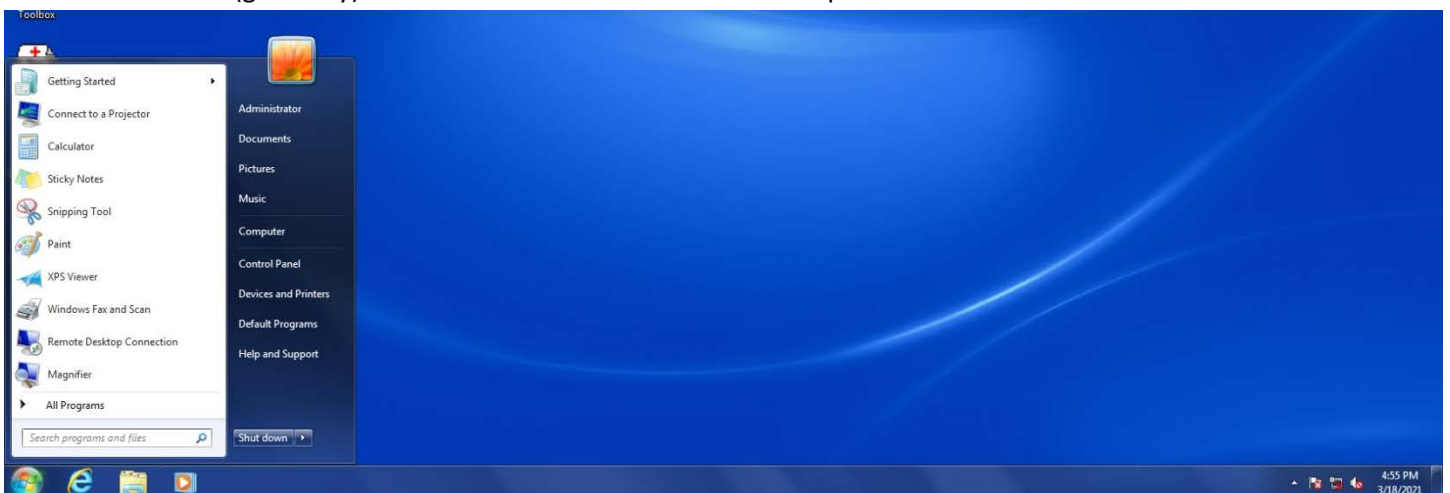
- You need administrator privileges to proceed. If your user account does not have such privileges, please log on with an administrator account. Windows will tell you if your account cannot perform the required tasks.



- Verify that file usbser.sys exists in C:\Windows\system32\drivers. If not copy the provided usbser.sys and paste it into the folder.

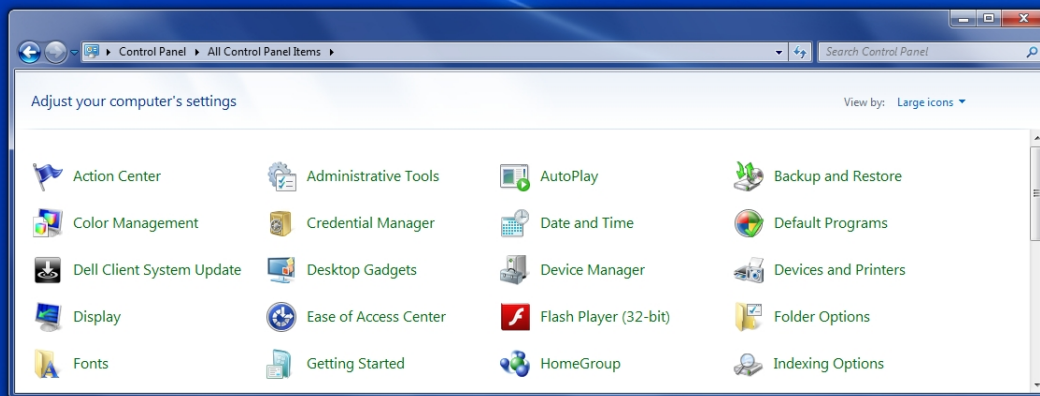


- Click Start button (generally) in the bottom left corner of the desktop.

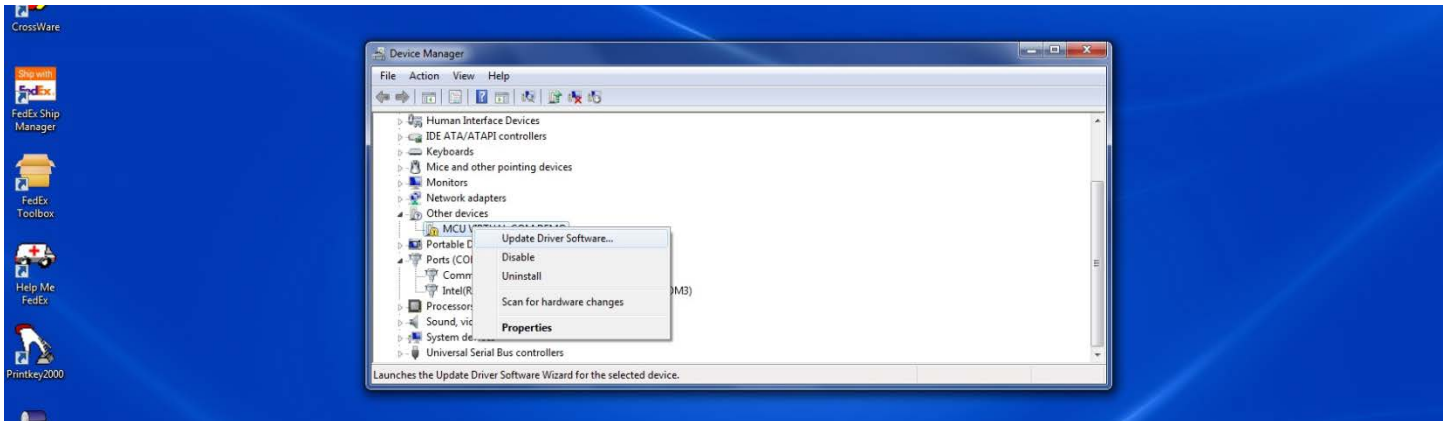


- Find Control Panel and click it to open

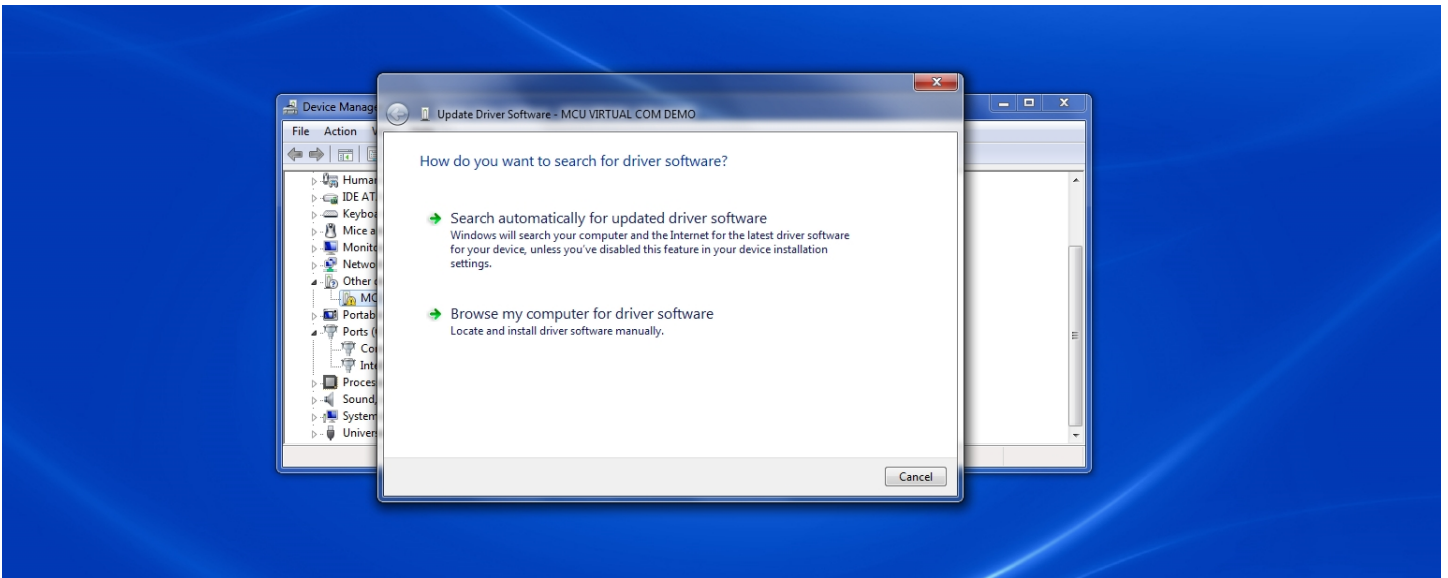
- If Control Panel shows Categories, click "Hardware and Sound" and then Device Manager under Devices and Printers. If Control Panel shows Icons, click Device Manager.



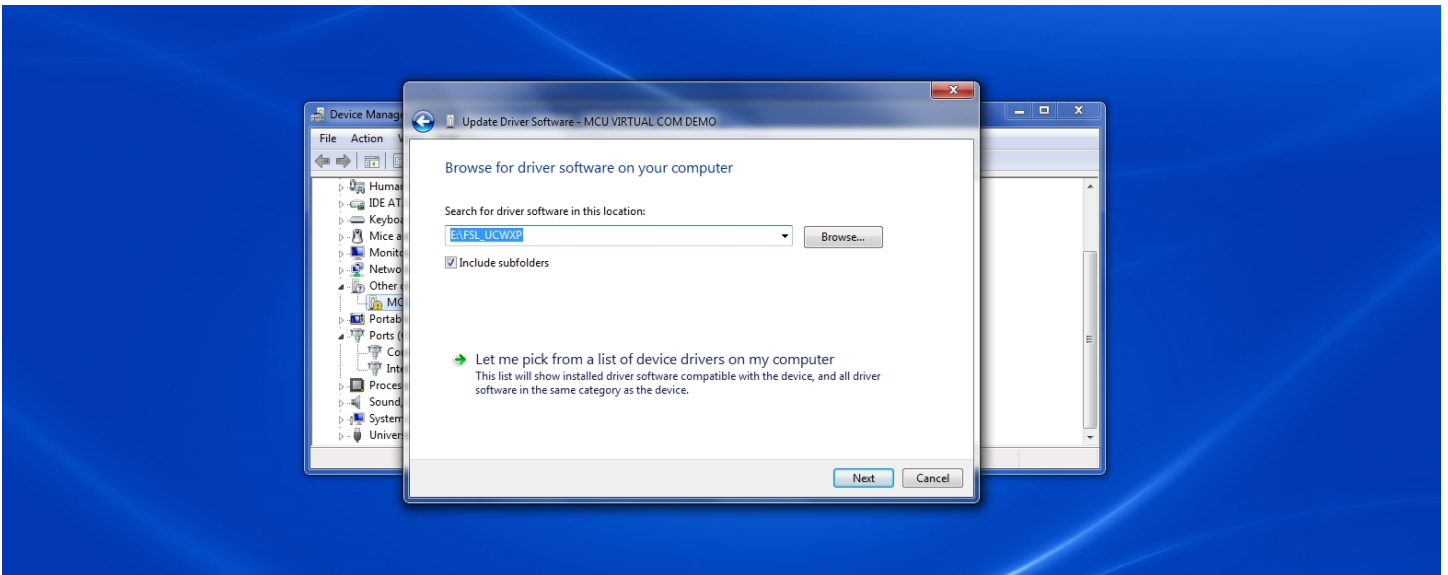
- In Device Manager, under Other devices, find MCU Virtual Com Demo. Right click and select Update Driver Software...



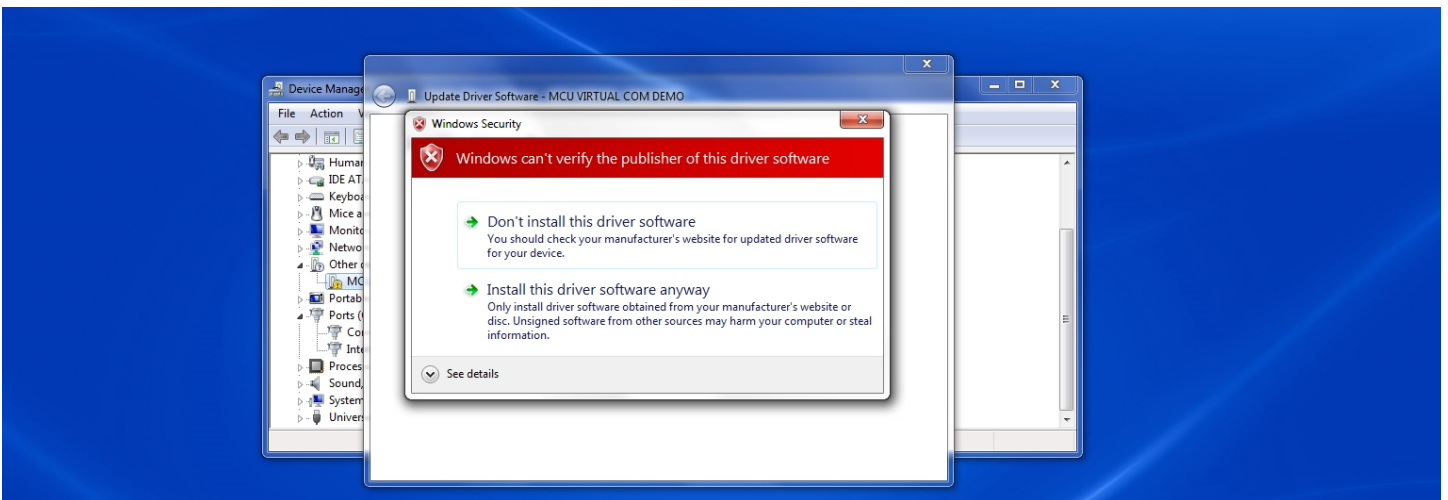
- Windows will ask how to search for driver software. Select “Browse my computer for driver software.”



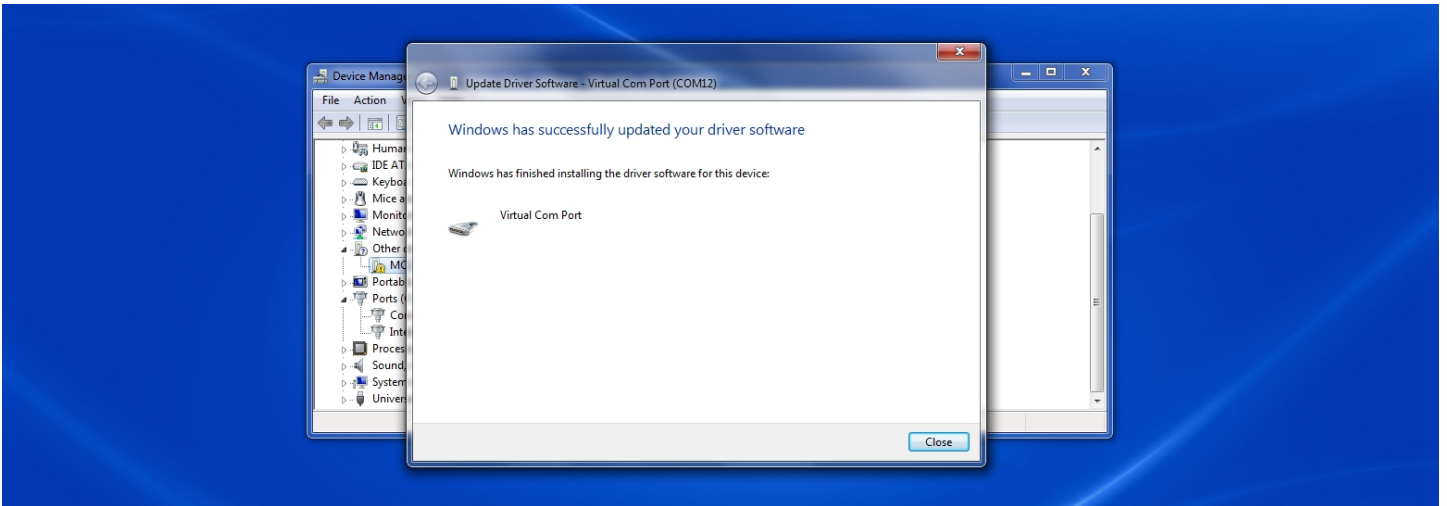
- Click the Browse button to locate the ACE Apex driver files or type in the address to the folder. Click Next.



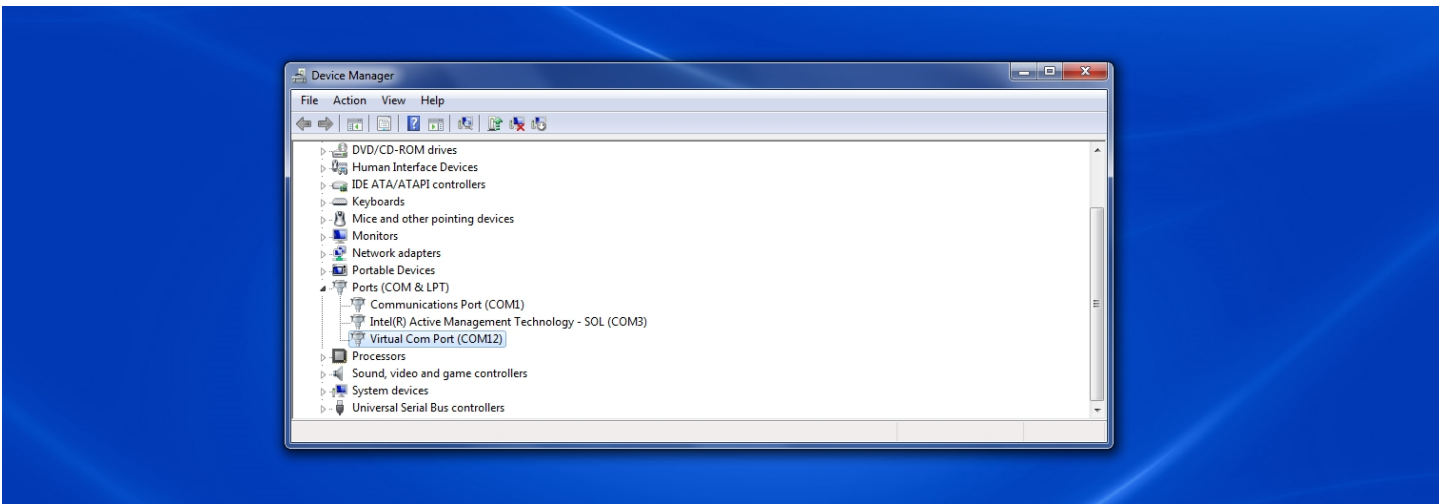
- Windows Security will warn you that the driver is not digitally signed and cannot be verified. Select Install this driver software anyway.



- Let Windows finish installing driver software. This might take up to 5 minutes. Windows will tell you that driver was updated successfully.



- You should now see Virtual Com Port (COMxx) under Ports where xx will be the port number.



- You have successfully installed the ACE Apex driver. You can now run the update software.